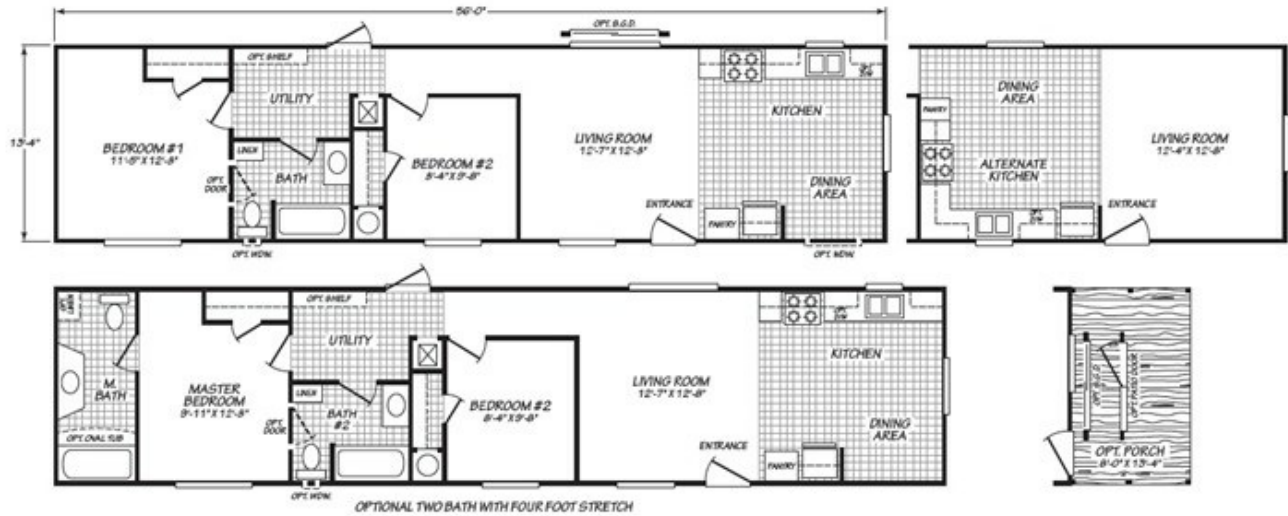




BROADMORE

www.fleetwoodhomes.com



**MODEL 14562B**

2 Bedroom • 1 Bath • 746 Square Feet

©2017 FLEETWOOD HOMES INC. ALL RIGHTS RESERVED

Important: Because we continually update and modify our products, it is important for you to know that our brochures and literature are for illustrative purposes only. ILLUSTRATIONS MAY SHOW OPTIONAL FEATURES. All information contained herein may vary from the actual home we build. Dimensions are nominal length and width measurements are from exterior wall to exterior wall. We reserve the right to make changes at any time, without notice or obligation, in prices, colors, materials, specifications, features and models. Please check with your retailer for specific information about the home you select.



BM/230/06/17  
PFS APPROVAL 4/10/17



Our home building facilities invest in continuous product and process improvements. Plans, dimensions, features, materials, specifications and availability are subject to change without notice or obligation. Renderings and floor plans are representative likenesses of our homes and may differ from the actual homes. We invite you to tour a Home Center near you and inspect the highest value in quality housing available or call (208) 733-7755 to speak with a Home Consultant. Copyright 2017, CMH. All rights reserved.

## CLAYTON HOMES-TWIN FALLS

21360 HIGHWAY 30  
FILER, ID 83328

Monday - Thursday: 9am - 7pm  
Friday: 9am - 6pm  
Saturday: 9am - 5pm  
Sunday: Closed  
(208) 733-7755